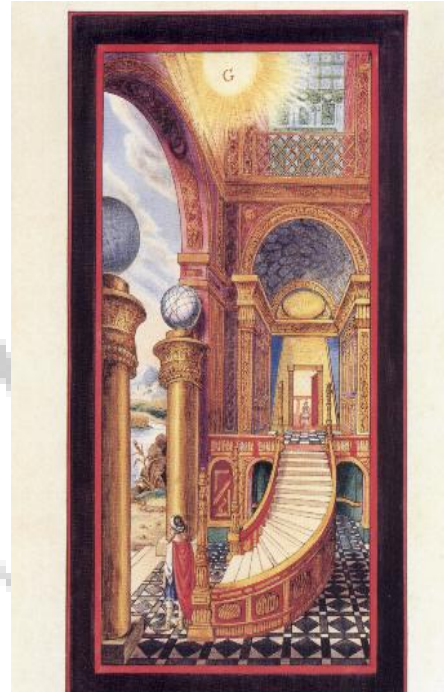


WORKING TOOLS (2nd Degree)

The working tools of an Entered Apprentice are those used to prepare the stone for the hands of the more expert workman. The working tools of this Degree, the square, the level and the plumb rule, **are** the tools of the expert Craftsman, the skilled mason responsible for the correct interpretation of the architect's design. These then are the most important of all tools and the way in which they were presented to you is probably one of the most simple yet meaningful passages in the whole of our Masonic ritual. If you really absorb the philosophy contained in it, you cannot fail to become a worthy Freemason and a credit to the society in which you live.



“I now present to you the Working Tools of a Fellow Craft Freemason; they are the *Square, Level* and *Plumb Rule*.

...indicates working tools as they are named....

The Square is to try, and adjust rectangular corners of buildings, and assist in bringing rude matter into due form; the Level to lay levels and prove horizontals; the Plumb Rule to try, and adjust uprights while fixing them on their proper bases.

But as we are not all operative Masons, but rather free and accepted, or speculative, we apply these tools to our morals.

In this sense, the Square teaches morality, the Level equality, and the Plumb Rule justness and uprightness of life and actions.

Thus by square conduct, level steps, and upright intentions, we hope to ascend to those immortal mansions whence all goodness emanates.”

(At the end of the presentation, in some Lodges, the Brethren all clap once on the word “emanates”.)